

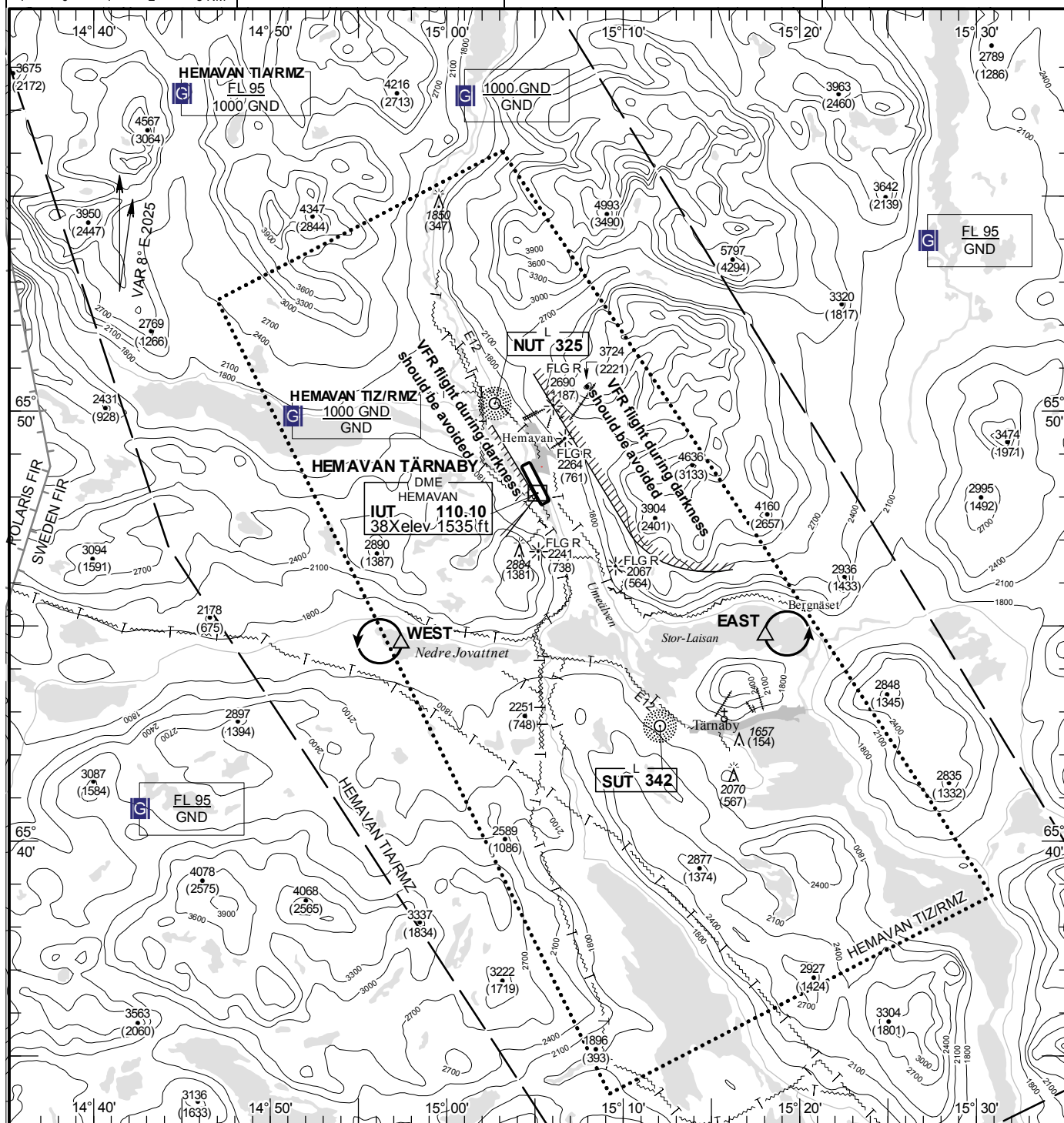
A scale bar for a map at a scale of 1:250,000. The top part of the bar is labeled '1 0 1 2 3 4 5 km'. The bottom part of the bar is labeled '1 0 1 2 3 N'. The bar is divided into segments representing these distances.

**TA 9000 AMSL**

## 122.980

**AD 2 ESUT 9-1**

HEMAVAN TÄRNABY  
SWEDEN



## NIL

| RWY<br>NR | THR<br>ELEV | PAPI<br>(MEHT)        |
|-----------|-------------|-----------------------|
| 15        | 1503 ft     | Left/3.50°<br>(40 ft) |
| 33        | 1502.5 ft   | Left/3.00°<br>(26 ft) |

## NIL

**Warning**  
Heavy turbulence and down draft may occur in the vicinity of the AD when wind is above 20 kt in all directions.

EAST:

Hold at the peninsula Bergnäset in  
lake Stor-Laisan, east of point  
654446N 0151803E

WEST:

Hold at western part of Nedre  
Jovattnet, west of point 654435N  
0145724E

See GEN 2.3

LFV

CHANGE: Editorial

AIRAC AIP AMDT 3/2025 **12 JUN 2025**

Reverse side intentionally blank